



**Westwood**  
Projects



# Mezzanine Floors





# What, Why, Where Mezzanine Floors

## What is a mezzanine floor?

A Mezzanine Floor is a fully self-supported structure that stands independently from the main building. The mezzanine is constructed of hot-rolled steel beams, supported from a grid of columns or posts.

## Why would I need a mezzanine floor?

A mezzanine floor unlocks space within your current premises. This is a cost effective investment that will transform your building, offering a fresh, blank canvas to better configure the space, improve workflow and/or use of storage.

## Where can I use a mezzanine floor?

- Warehouses - offers additional storage and production space.
- Offices - offers space for meeting rooms, file storage and a better working environment for your staff.
- Retail - offers space to increase shop floor layout, stock rooms or break rooms for your staff.

**Don't move out .....**

**move up!**



# Pelham Laboratories: Case Study 1

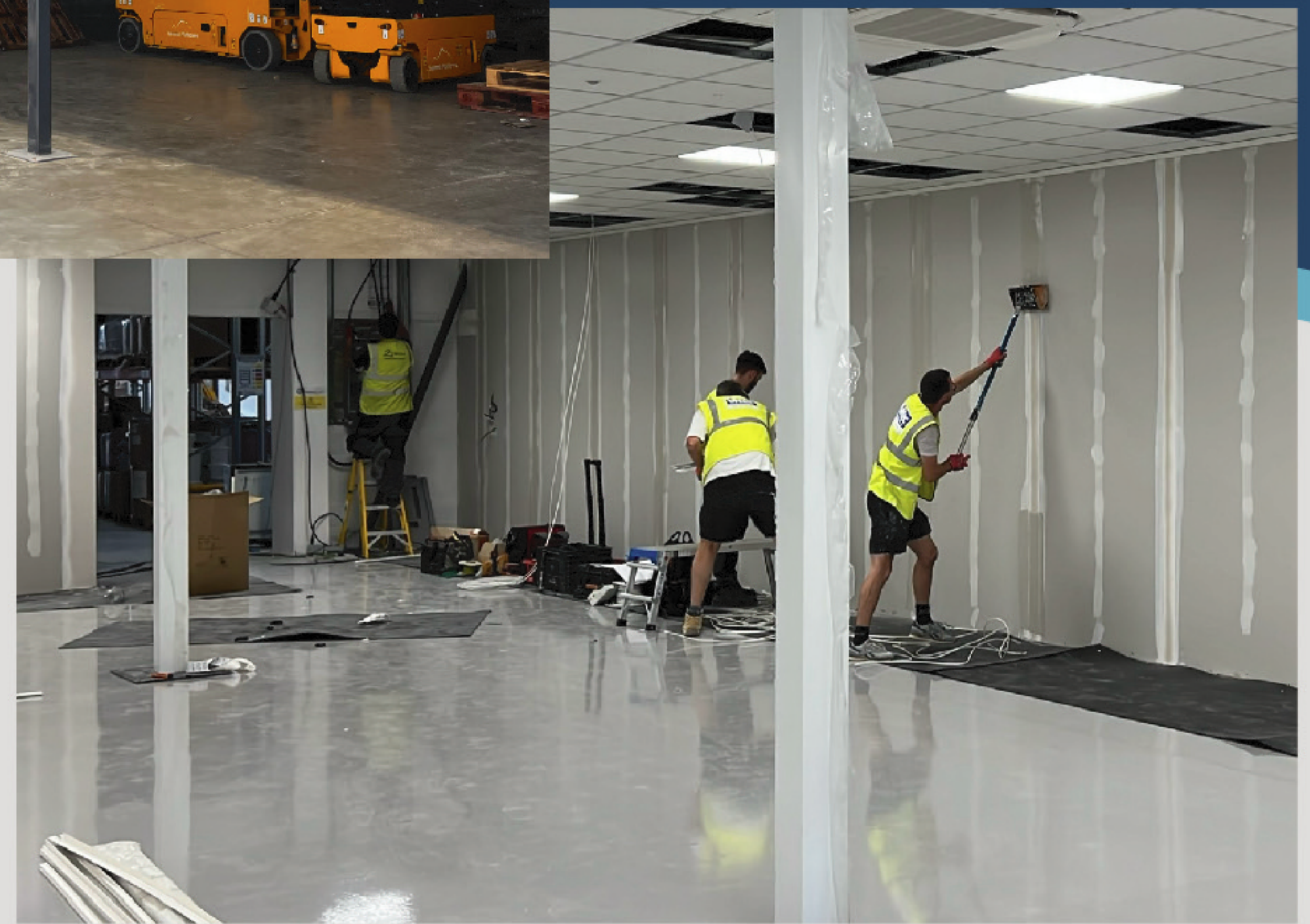
## Why a mezzanine floor?

Westwood Projects were engaged by Pelham Laboratories to design, manufacture, and install a 480m<sup>2</sup> mezzanine floor at their new manufacturing and production facility in Waterlooville. The mezzanine was installed to provide office space, with the underside being utilised as a production area.



Mezzanine frame installation

Safety and quality checks



## What we provided:

Mezzanine Specification:

No. of tiers: 1

Floor size: 20m x 19m

Floor Height: 3.5m to deck

Design Load: 4.8kN/m<sup>2</sup>

60 minute Fire Protection

Building Control Application & Management

## Words from our client ...

"I can't recommend the Westwood Projects Team highly enough - approachable, professional and flexible when installing a large mezzanine, internal offices and a manufacturing space over 6m high. The quality of their work has been excellent"



Completed mezzanine floor in use





Completed mezzanine floor in use

## Why a mezzanine floor?

Westwood Projects were engaged by Helliwell Flowers to design, manufacture, and install a new storage mezzanine at their facility in Southampton. This rapidly increasing business, will use their mezzanine to additional storage for products delivered to Hampshire, Dorset, The Channel Islands and more.

### What we provided:

Mezzanine Specification:

No. of tiers: 1

Floor Size: 13m x 12.2m

Floor height: 4m to deck

Design load: 4.8kN/m<sup>2</sup>

60 minute Fire Protection

Building Control Application & Management

# Helliwell Flowers : Case Study 2

This project was time critical and needed to be completed prior to the client's peak season leading into Valentine's Day. Westwood took extra measures to meet the clients needs by using specialist lifting equipment to install the mezzanine structure over the top of existing office and welfare facilities.

All works were completed in 6 days, gaining Helliwell Flowers an additional 130m<sup>2</sup> of workspace. Just in time for their peak season deadline!



Production and installation of mezzanine floor



Mezzanine deck boards installed



# Our process

## 1 - Free, No Obligation Site Visit

We will conduct a site survey and discuss your requirements

## 2- Site Visit Report & Quote

Preperation of drawings and quotation

## 3 - Refine & Consider

Take as long as you need, any changes to layouts or questions we are here to help

## 4 - Proceed

Construction survey carried out, CAD drawings created, 'Structural design report' and installation schedule approved

## 5 - Production & Installation

Production is complete and installation will immediately commence. Safety and quality inspections are carried out throughout construction.

## 6 - Ancillary Works

If you asked us to carry out ancillary works we will proceed with them, including mandatory Fire Protection works.

## 7 - Completion & Hand Over

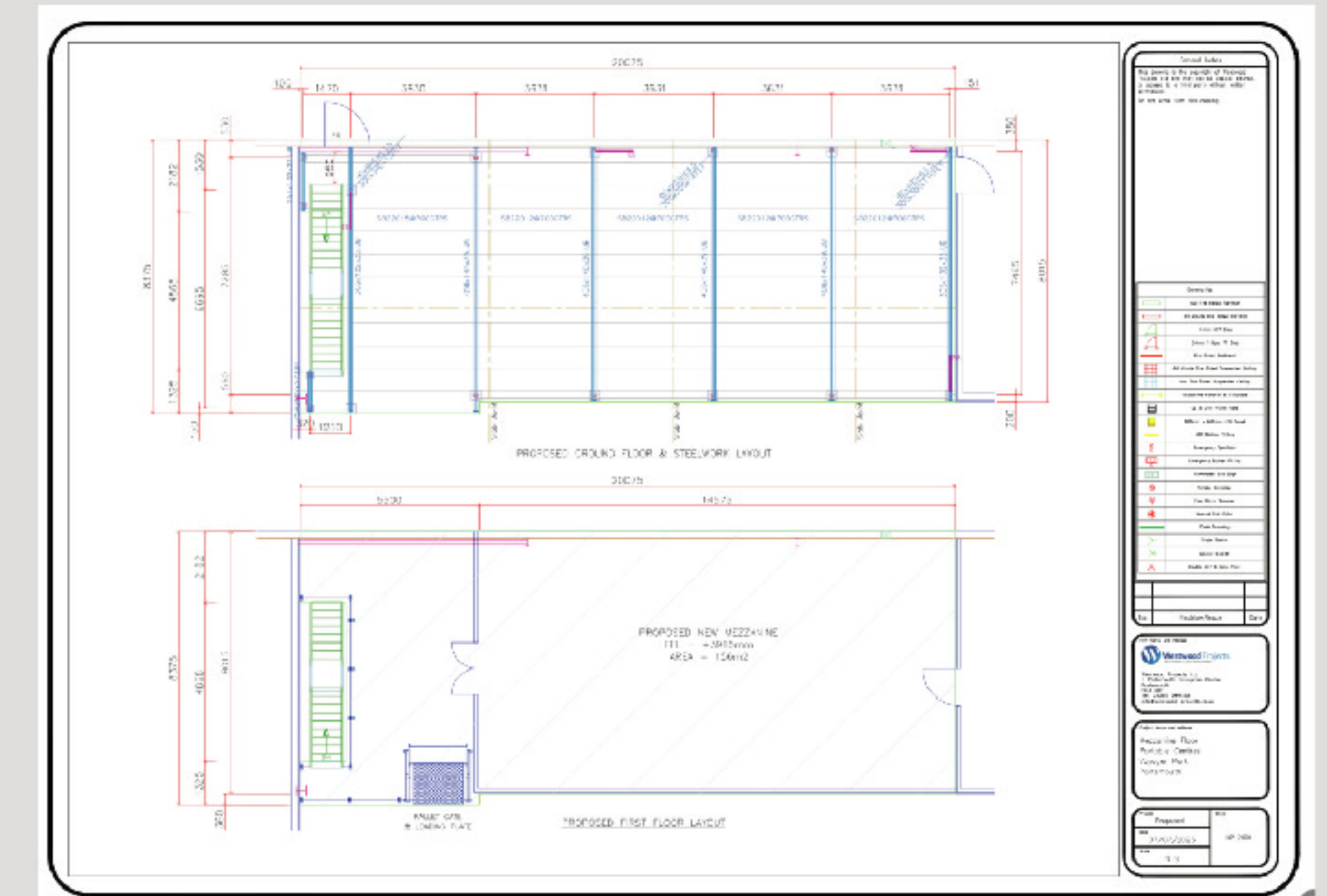
Your mezzanine floor project and final inspections are now complete and is ready for occupation.

**Book your free site visit today!**

[www.westwood-projects.co.uk](http://www.westwood-projects.co.uk)



Site visit



CAD drawings



Production & Installation



Completion & Hand over



# Contact Us!



Check out our socials!



Visit our website!

-  023 9298 9759
-  [info@westwood-projects.co.uk](mailto:info@westwood-projects.co.uk)
-  [www.westwood-projects.co.uk](http://www.westwood-projects.co.uk)
-  1, Portsmouth Enterprise Centre, Quartremain Road, Portsmouth, Hampshire PO3 5QT